

Ielele S.N.L. ensemble





### Ielele S.N.L. ensemble

Architecture: ateliercetrei

Design Year: 2014–2020 | Completion year: 2025

## LOCATION

The Ielele S.N.L. ensemble is located in Smida, a small mountain village in the heart of the Apuseni Mountains, within Beliș. Set at approximately 1,100 meters altitude, the area is defined by dense spruce forests, alpine clearings, and the upper course of the Someșul Cald river. Nearby, lies Lake Beliș-Fântânele, one of Romania's largest mountain reservoirs, supporting year-round activities such as water sports, fishing, hiking, and winter recreation. Approximately 35–40 km to the west, the Padiș plateau, part of Apuseni Natural Park, offers spectacular karst landscapes, caves, and marked trails, positioning the project within a well-established eco-tourism circuit.

Although immersed in landscape, the site remains accessible. It is located approximately 80 km (around 1.5–2 hours by car) from Cluj-Napoca International Airport, which provides direct connections to major European cities. The historic city of Oradea lies roughly 140 km to the west, extending the project's regional and cross-border reach. A fully paved road ensures direct access to the site, reinforcing the delicate balance between remoteness and connectivity. The proximity to major natural attractions and urban centres ensures accessibility without compromising remoteness mountain regions, bringing together architecturally curated heritage houses with a clear conceptual narrative, experiential tourism and a privileged natural setting with year-round potential.



Site plan



S1

L2

L1

S2



## CONCEPT

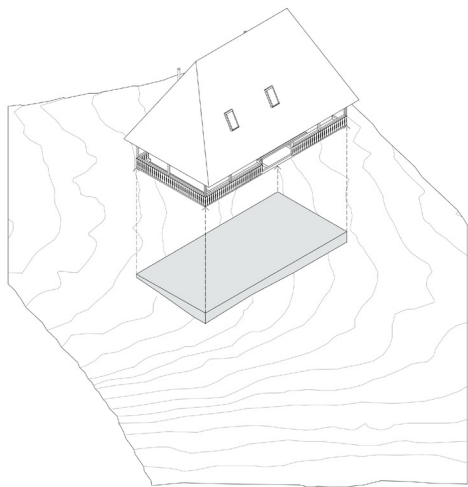
In Romanian folklore, the lelele are supernatural female spirits - mysterious, beautiful, and dangerous - known for their mesmerizing dances in remote meadows and forests. Their name evokes seduction, wilderness, and an otherworldly presence, making it an evocative choice for a retreat immersed in nature. Conceived as a fly-fishing escape along the Warm Someș river, the project welcomes guests from Western Europe and beyond and operates on a fixed occupancy pattern.

The project investigates the refurbishment and second resettlement of four traditional Romanian wooden houses. Originally built in one of Romania's most identity-defining regions, Maramureș, the houses were later moved to Sălaj and are now relocated once more - this time to Smida, one of the most picturesque dispersed villages in the Apuseni Mountains of northwestern Transylvania. This raises a central ethical question: how can the resettlement of these four houses remain unambiguous? How can one clearly understand that they do not originate in Smida and are not representative of local Apuseni architecture?

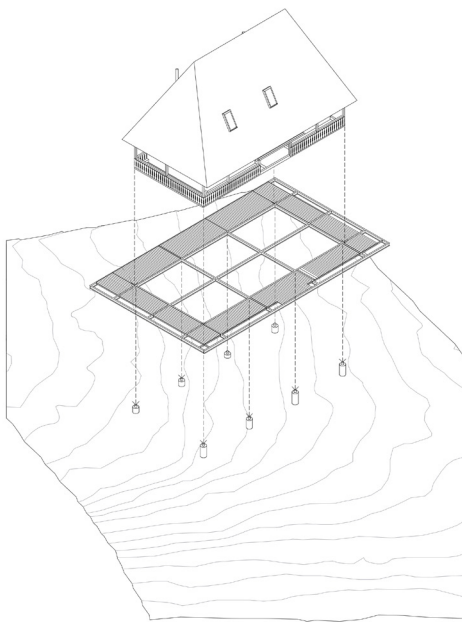
The answer lies in treating the houses as museum exhibits.

Instead of resting on traditional stone foundations, the four houses are placed on new pedestals inspired by museum display plinths. Their steel structure, wooden decking, and tray-like geometry signal their status as resettled artifacts while enabling a more deliberate and picturesque adaptation to the sloped terrain.

Typical rooting: rusticated stone plinth



Project proposed rooting: display plinth



Carefully positioned according to topography, vegetation, and orientation, the houses ensure privacy while opening to views of the dispersed settlement, the Warm Someş valley, and the surrounding forests. At first glance they may be mistaken for archaic rural dwellings - were it not for the steel-and-timber pedestals and the colored window and door frames. A chromatic code identifies each house - green, blue, yellow, and red - and extends into the interiors through the ceramic tiles of kitchens and bathrooms.

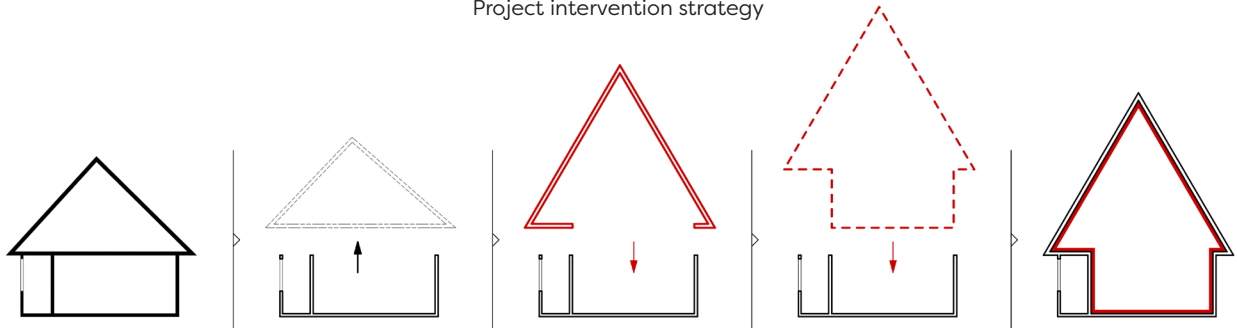
The pedestal system allows Houses S1 blue, L2 yellow, and S2 red to sit close to the eastern ridge, their wooden decks cantilevering among the pine trees. The decks expand the outdoor areas around each house, offering generous spaces to enjoy sunlight and uninterrupted views.

One of the two larger houses - L1 green - acts as the basecamp of the retreat. It houses a small reception that doubles as a fly-fishing shop, along with a generous living and dining area organised around a central kitchen island. The upper floor accommodates a host bedroom with an en-suite bathroom and a small office. The other three houses preserve their original two- or three-room layouts, enhanced with modern comforts and intended primarily for guests. Wood-burning stoves heat the bedrooms and living areas, contributing to the sensory authenticity of the rural experience. Earth-based plasters contrast with the clean-lined, bespoke contemporary furniture.

Interventions on the site were kept to a minimum. The retaining walls of the parking area are built from wooden railway sleepers - the same material used for the stairways leading up or down to each of the four pedestals.



Project intervention strategy



### Site information

Site area: 6800 sqm

4 refurbished Romanian wooden houses

Total gross area: ca. 372 sqm

Total usable area: ca. 261 sqm

Total bedrooms: 8

Guest capacity: 16 guests

Parking capacity: 8 vehicles



### House L1

Gross area: 123,2 sqm

### House L2

Gross area: 105,7 sqm

### House S1

Gross area: 80,6 sqm

### House S2

Gross area: 62,3 sqm



### On-site facilities

Private water supply via drilled well  
Full electrical connection, including  
three-phase power  
Modern on-site wastewater treatment system  
Efficient heating options: fireplaces  
and radiant heating panels





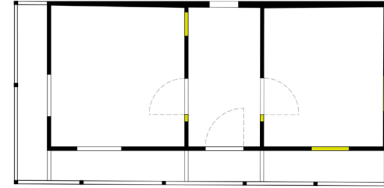
## L1 house The basecamp of the retreat (green)

Reception  
Kitchen  
Living and dining area  
1 Bedroom with an en-suite  
bathroom and a small office

Gross area: 123,2 sqm  
Usable area: 80,5 sqm

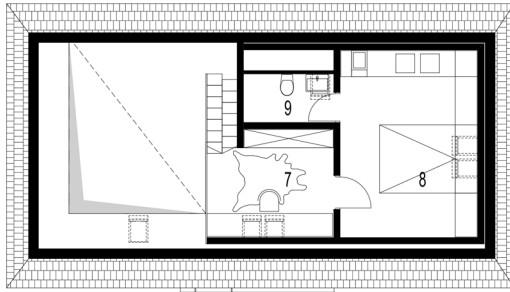
Guest capacity: 2 guests

House L1 (before)

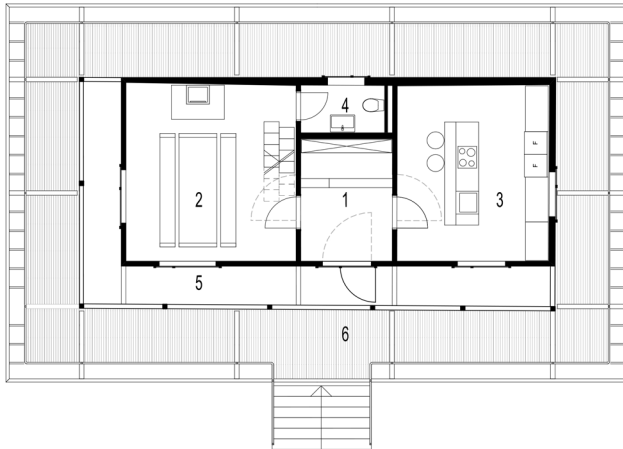


# L1 house plans (after)

Attic plan



Ground-floor plan



1 - wind-fang / reception  
2 - living and dining  
3 - kitchen

4 - bathroom  
5 - porch  
6 - terrace

7 - office  
8 - main bedroom  
9 - bathroom





## L2 house (yellow)

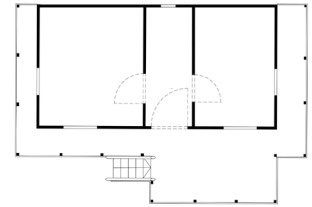
Entrance and storage area  
Kitchen and dining area  
3 Bedrooms with en-suite  
bathrooms and a small office

Gross area: 105,7 sqm

Usable area: 86,7 sqm

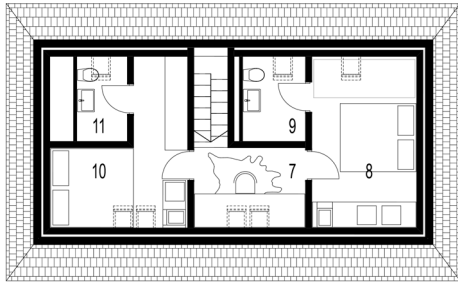
Guest capacity: 6 guests

House L2 (before)

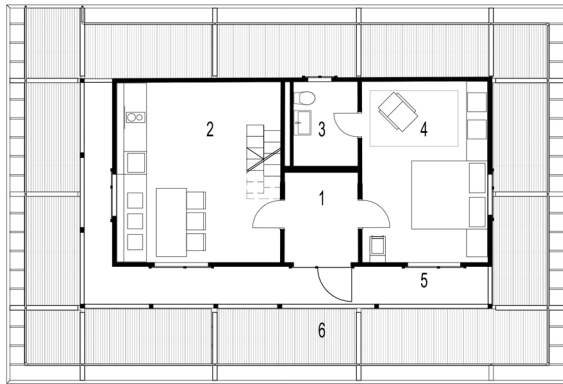


## L2 house plans (after)

Attic plan



Ground-floor plan



- |                      |             |              |               |
|----------------------|-------------|--------------|---------------|
| 1 - wind-fang        | 4 - bedroom | 7 - office   |               |
| 2 - dining + kitchen | 5 - porch   | 8 - bedroom  | 10 - bedroom  |
| 3 - bathroom         | 6 - terrace | 9 - bathroom | 11 - bathroom |



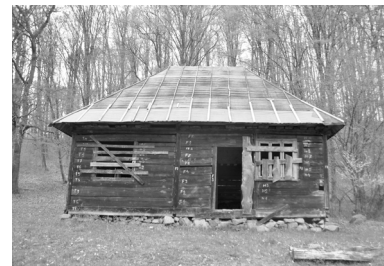
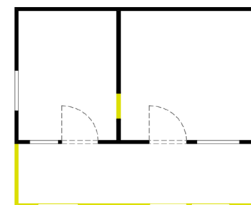
## S1 house (blue)

Kitchen and dining area  
2 Bedrooms with  
en-suite bathrooms  
A generous office space

Gross area: 80,6 sqm  
Usable area: 53,3 sqm

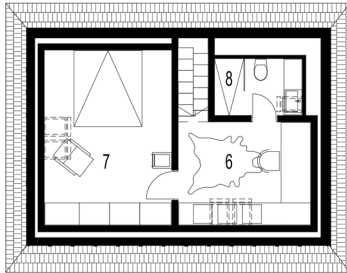
Guest capacity: 4 guests

House S1 (before)

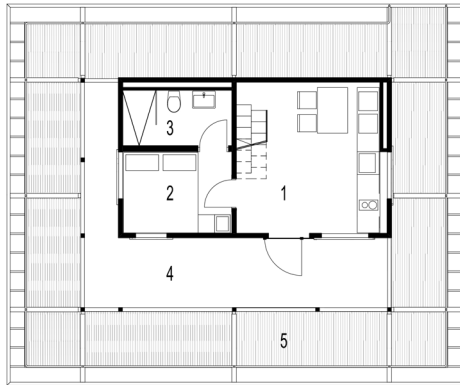


# S1 house plans (after)

Attic plan



Ground-floor plan



1 - dining + kitchen  
2 - bedroom  
3 - bathroom

4 - porch  
5 - terrace  
6 - office

7 - main bedroom  
8 - bathroom





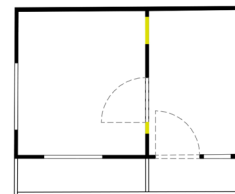
## S2 house (red)

Kitchen and dining area  
2 Bedrooms with  
en-suite bathrooms  
An office space

Gross area: 62,3 sqm  
Usable area: 40,0 sqm

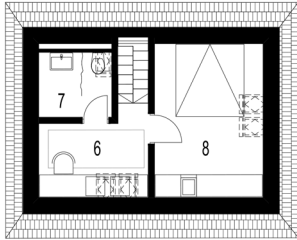
Guest capacity: 4 guests

House S2 (before)

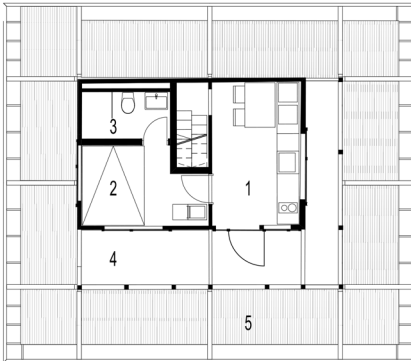


## S2 house plans (after)

Attic plan



Ground-floor plan



1 - dining + kitchen  
2 - bedroom  
3 - bathroom

4 - porch  
5 - terrace  
6 - office

7 - bathroom  
8 - main bedroom





presentation video

## CONTACT

**Liviu Neagoe**

email: [neagoeliv@gmail.com](mailto:neagoeliv@gmail.com)

tel: +41 76 725 20 67

## Site address

Smida, no. 22, Cluj County, Romania

Postal code: 407082



